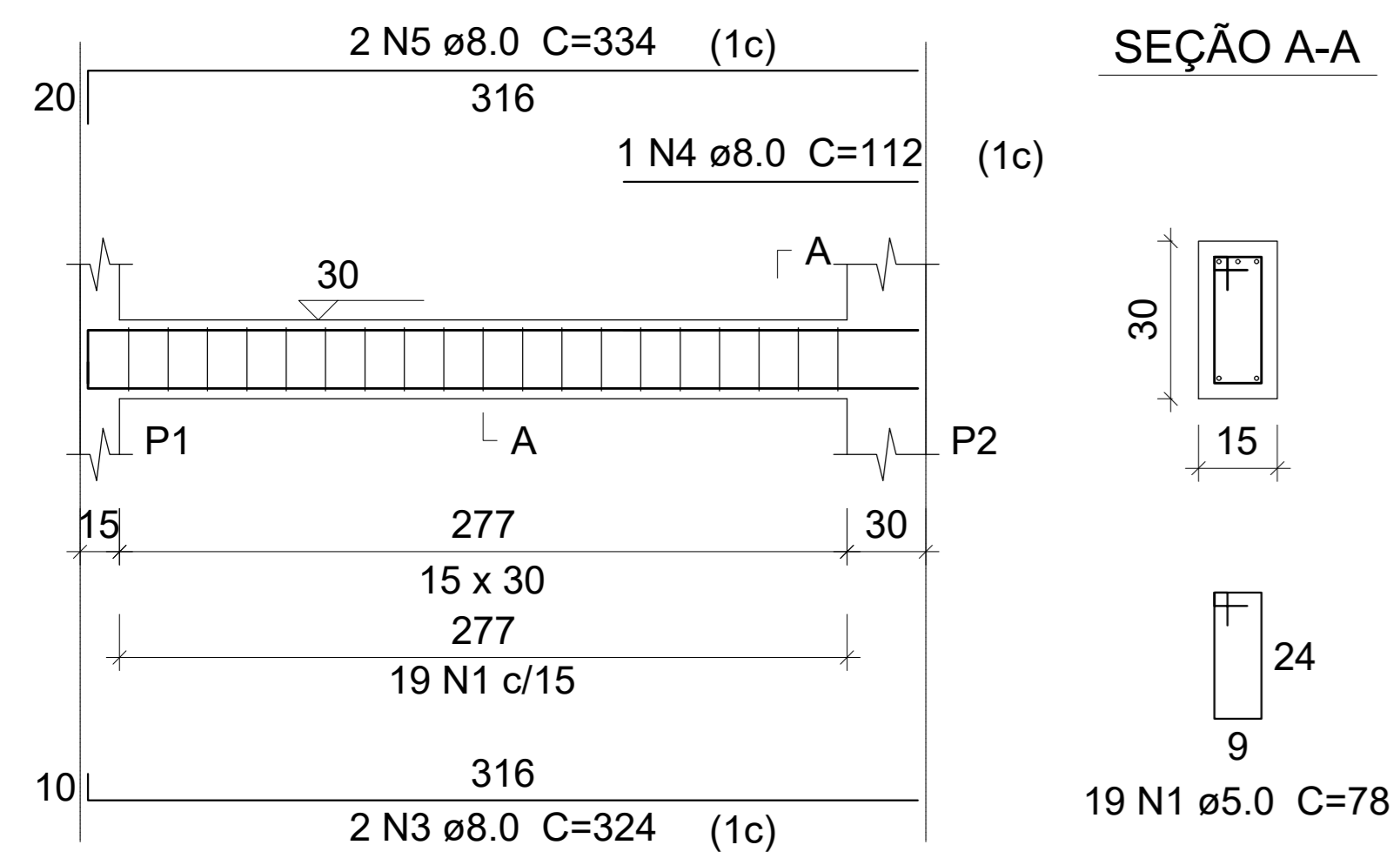


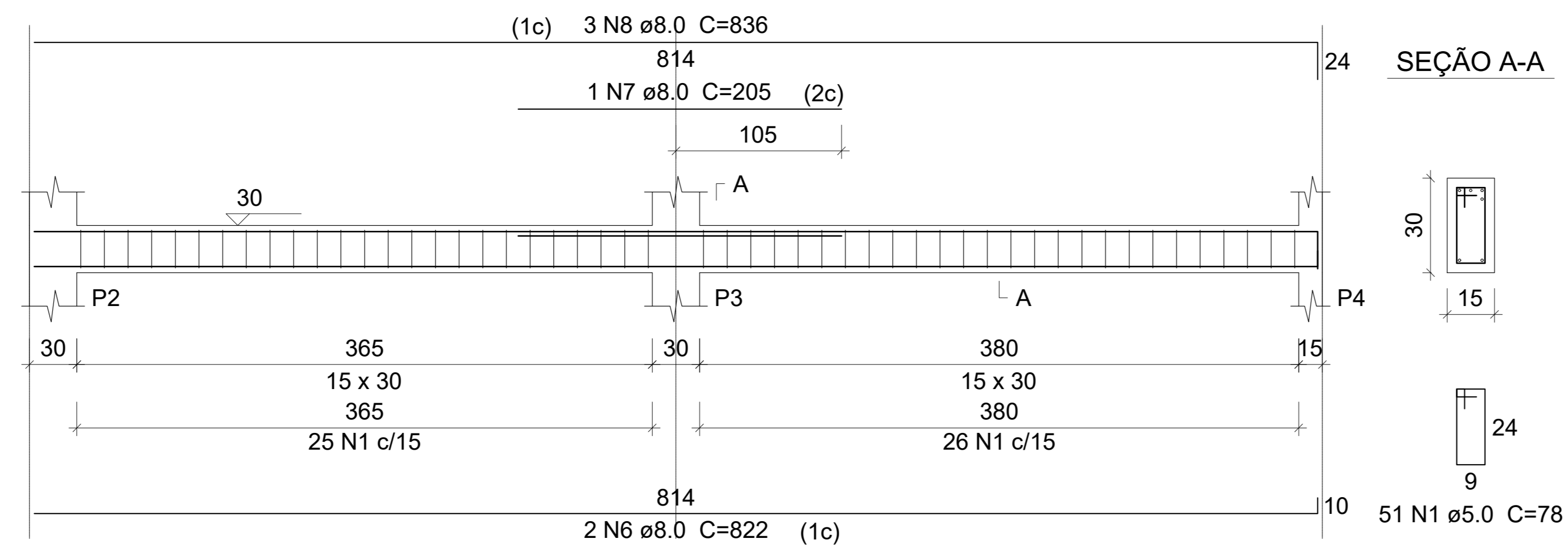
V1

ESC 1:50



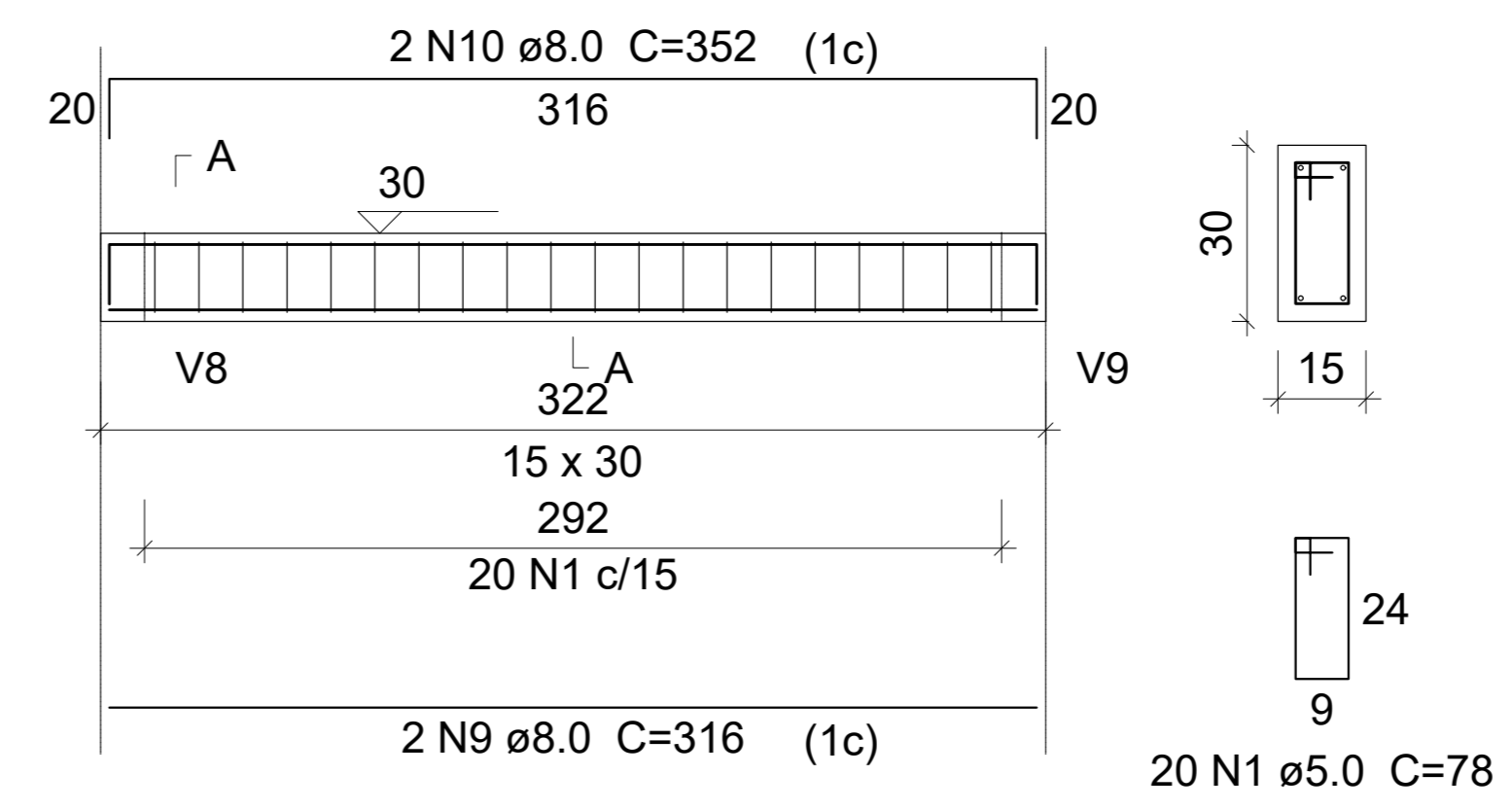
V2

ESC 1:50



V3

ESC 1:50



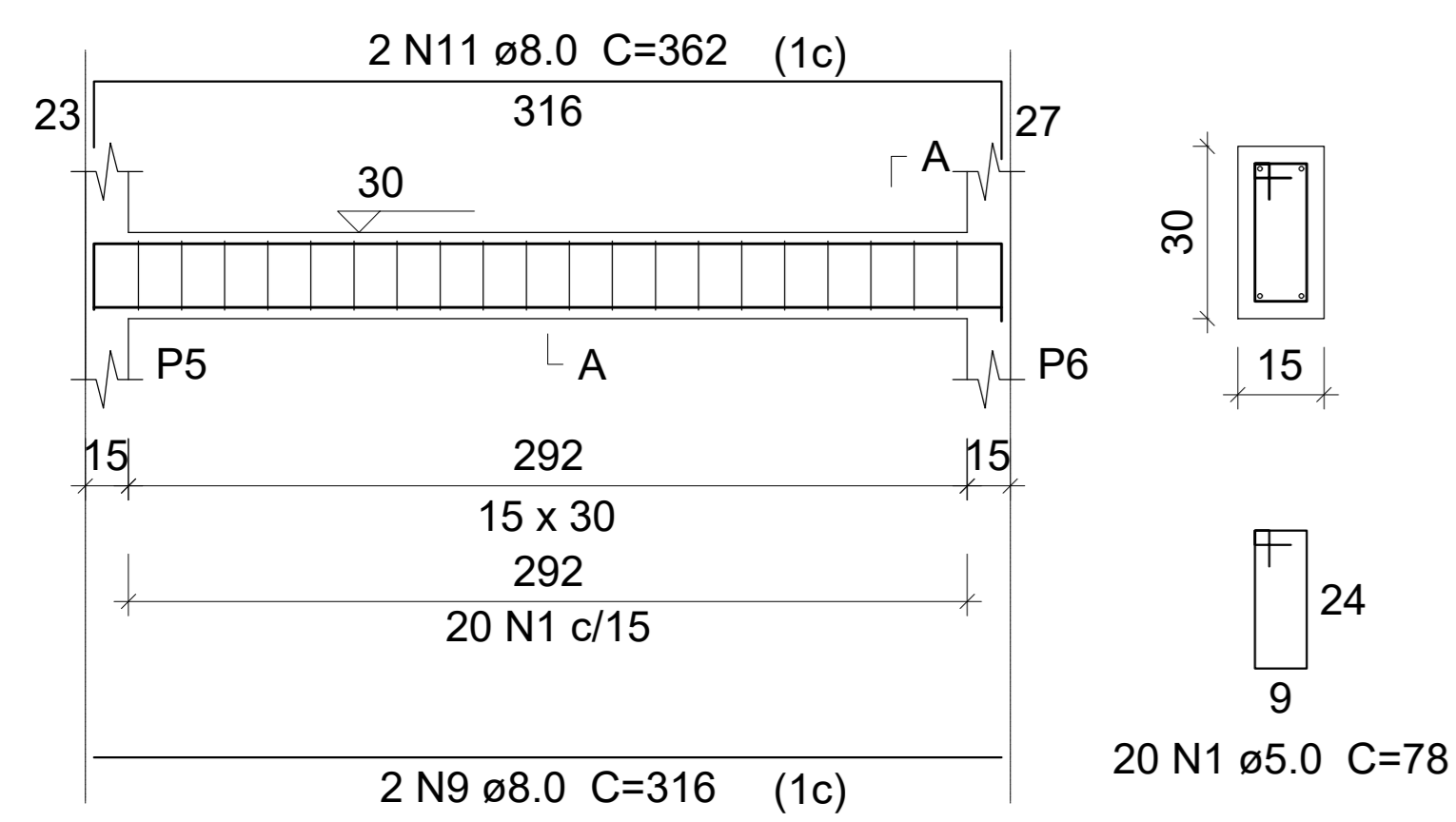
SEÇÃO A-A

Relação do aço

Baldrame:	V1	V2	
	V3	V4	
	V5	V6	
	V8	V9	
	V10	V11	
	V12	V13	
	V14		
	Térreo:	V1	V2
		V4	V5
		V6	V8
		V9	V10
		V11	V12
		V13	

V4

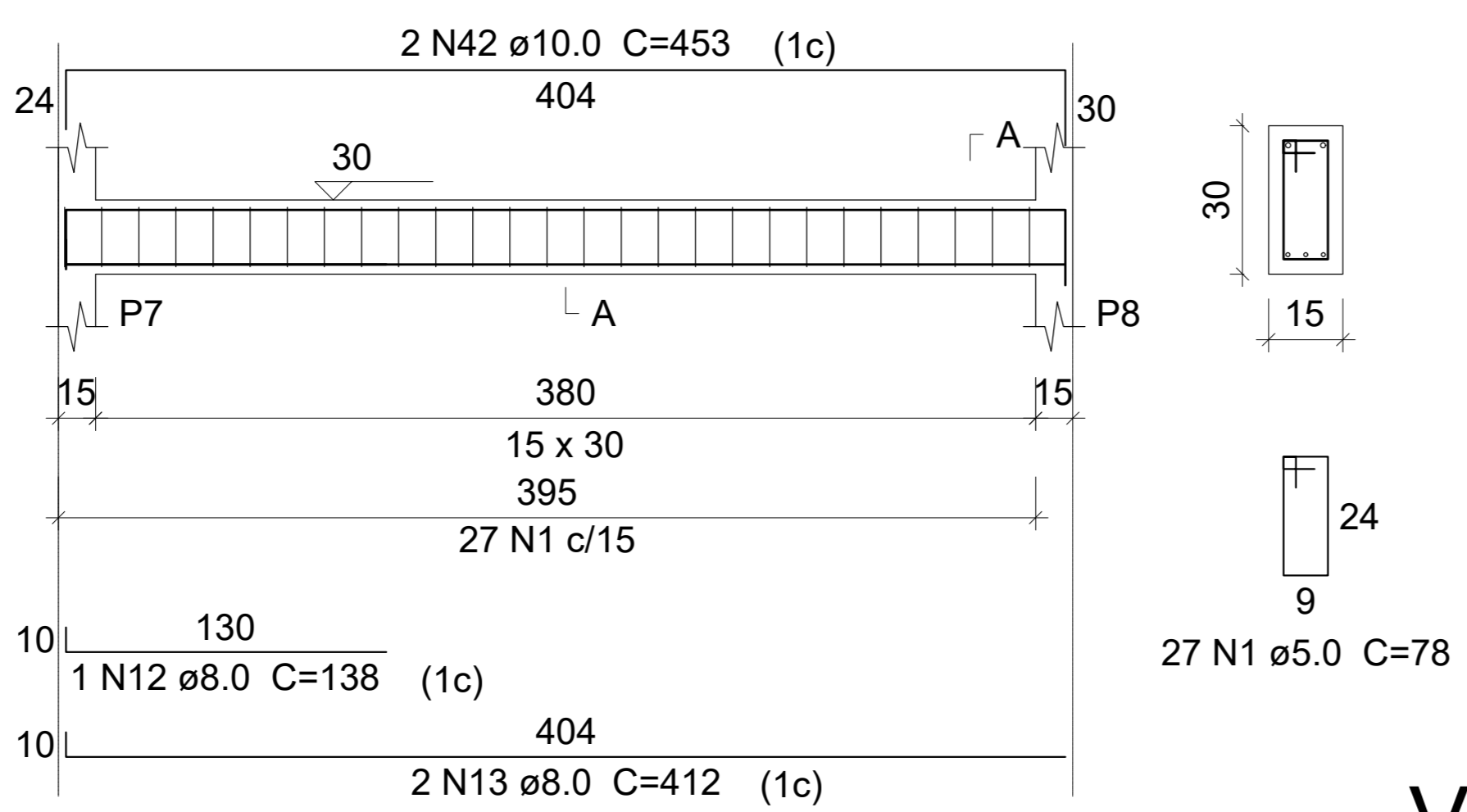
ESC 1:50



SEÇÃO A-A

V5

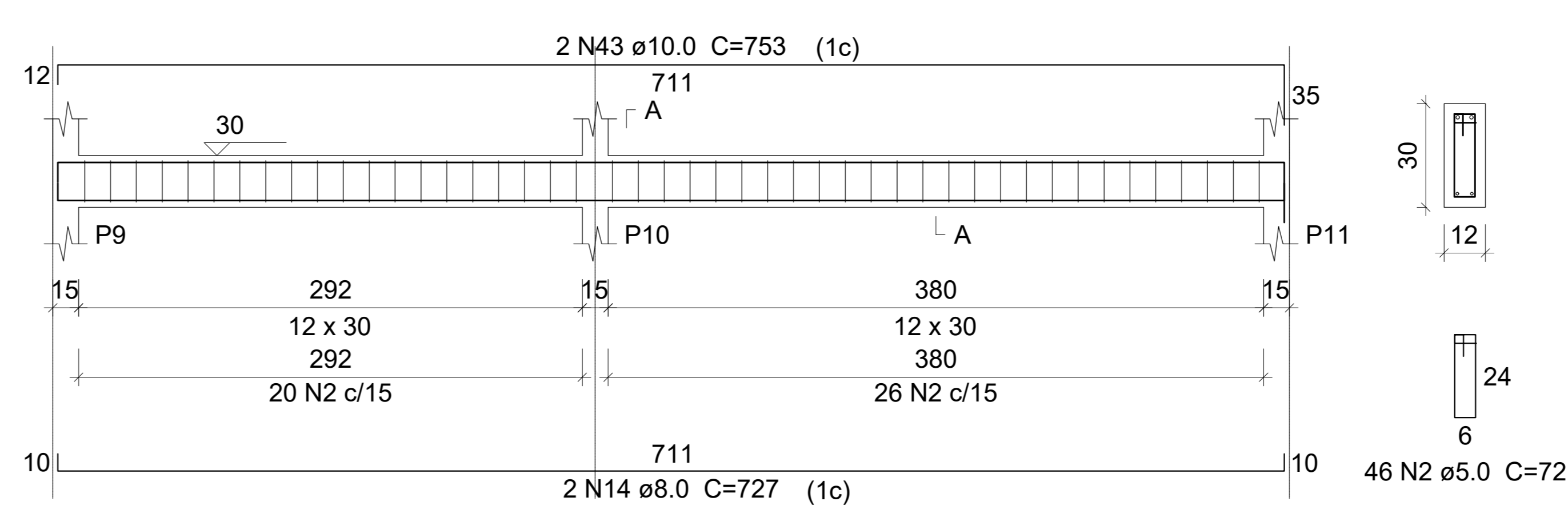
ESC 1:50



SEÇÃO A-A

V6

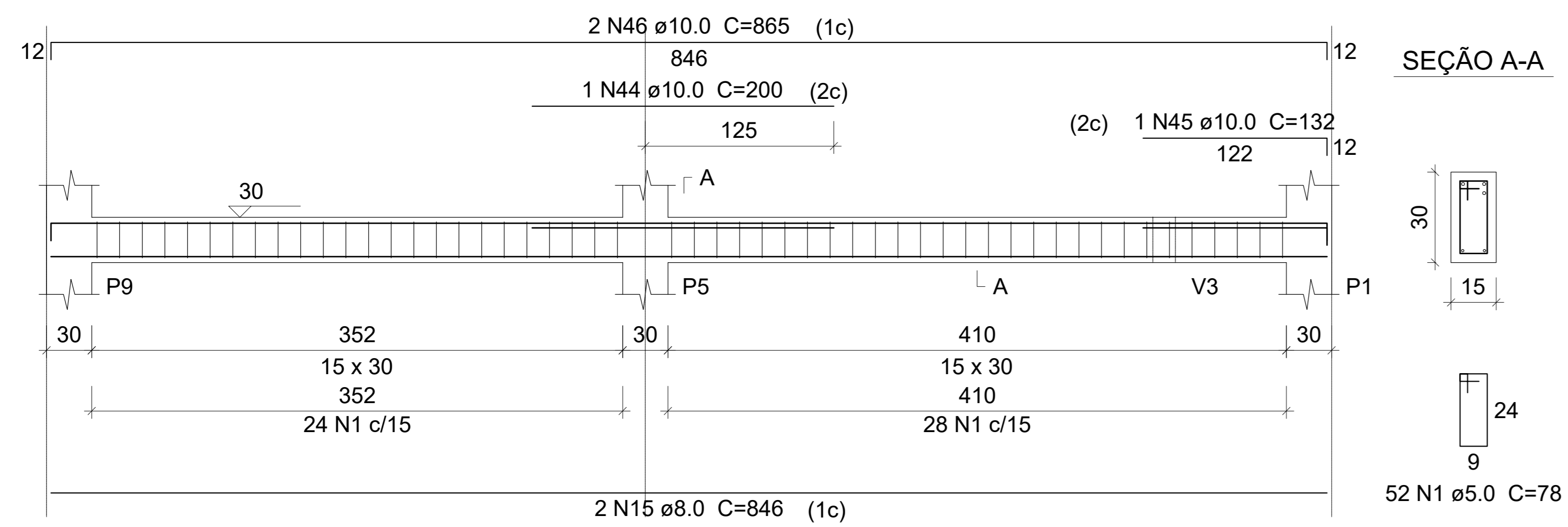
ESC 1:50



SEÇÃO A-A

V8

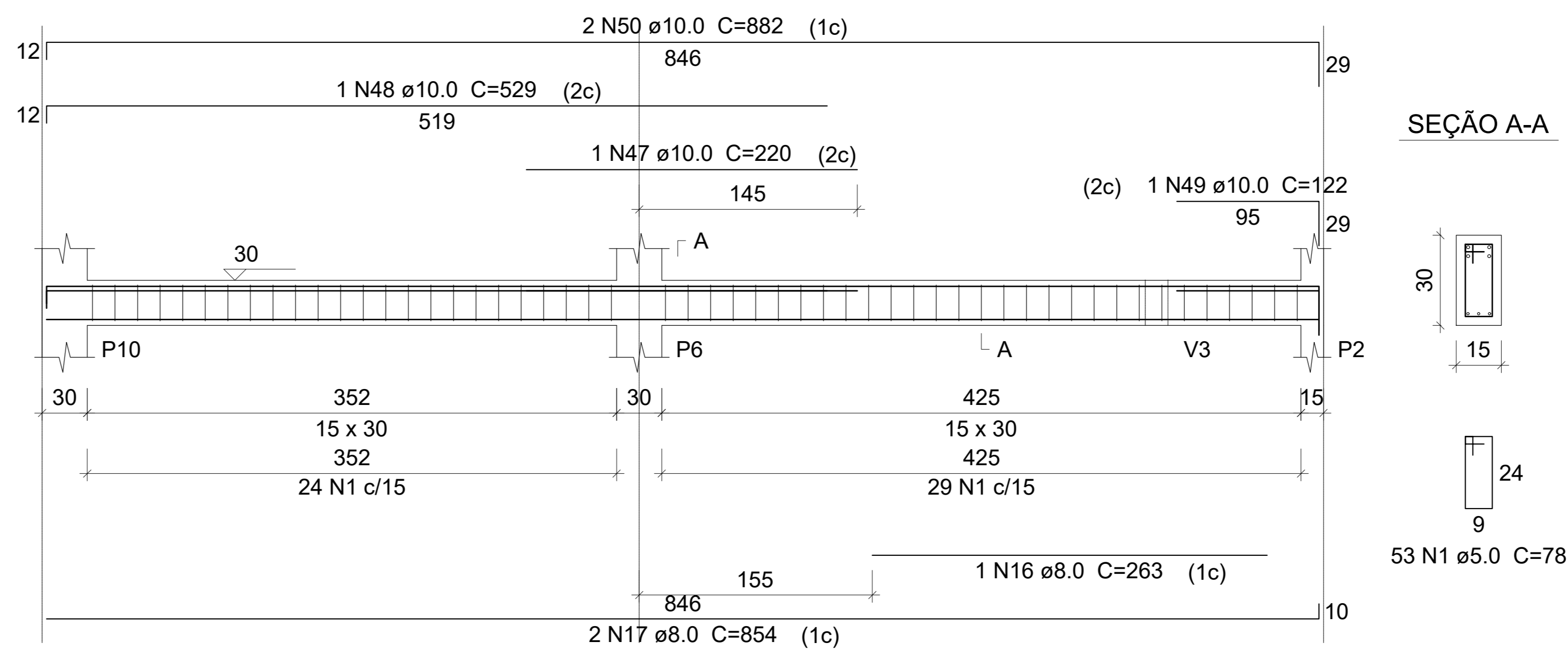
ESC 1:50



SEÇÃO A-A

V9

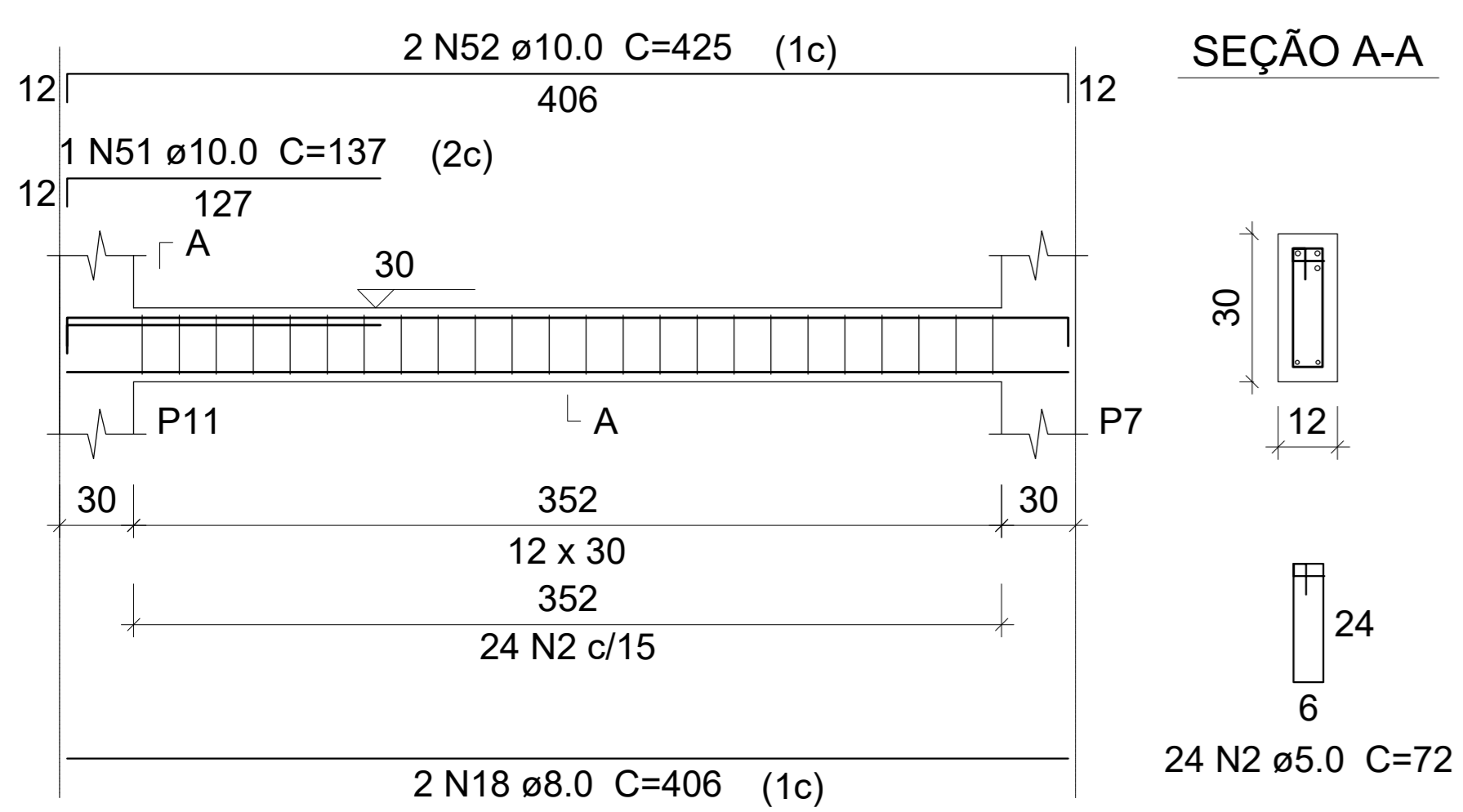
ESC 1:50



SEÇÃO A-A

V10

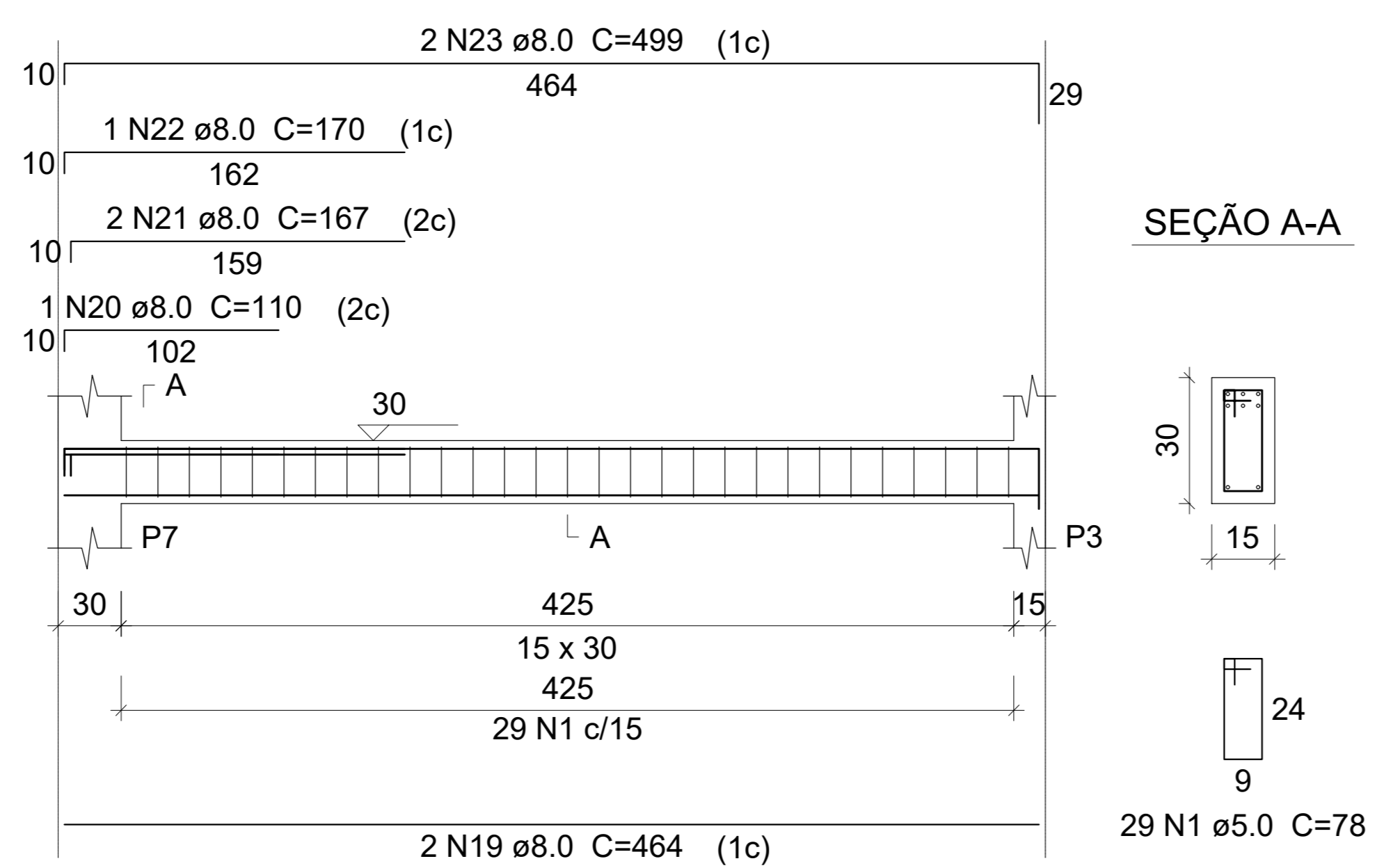
ESC 1:50



SEÇÃO A-A

V11

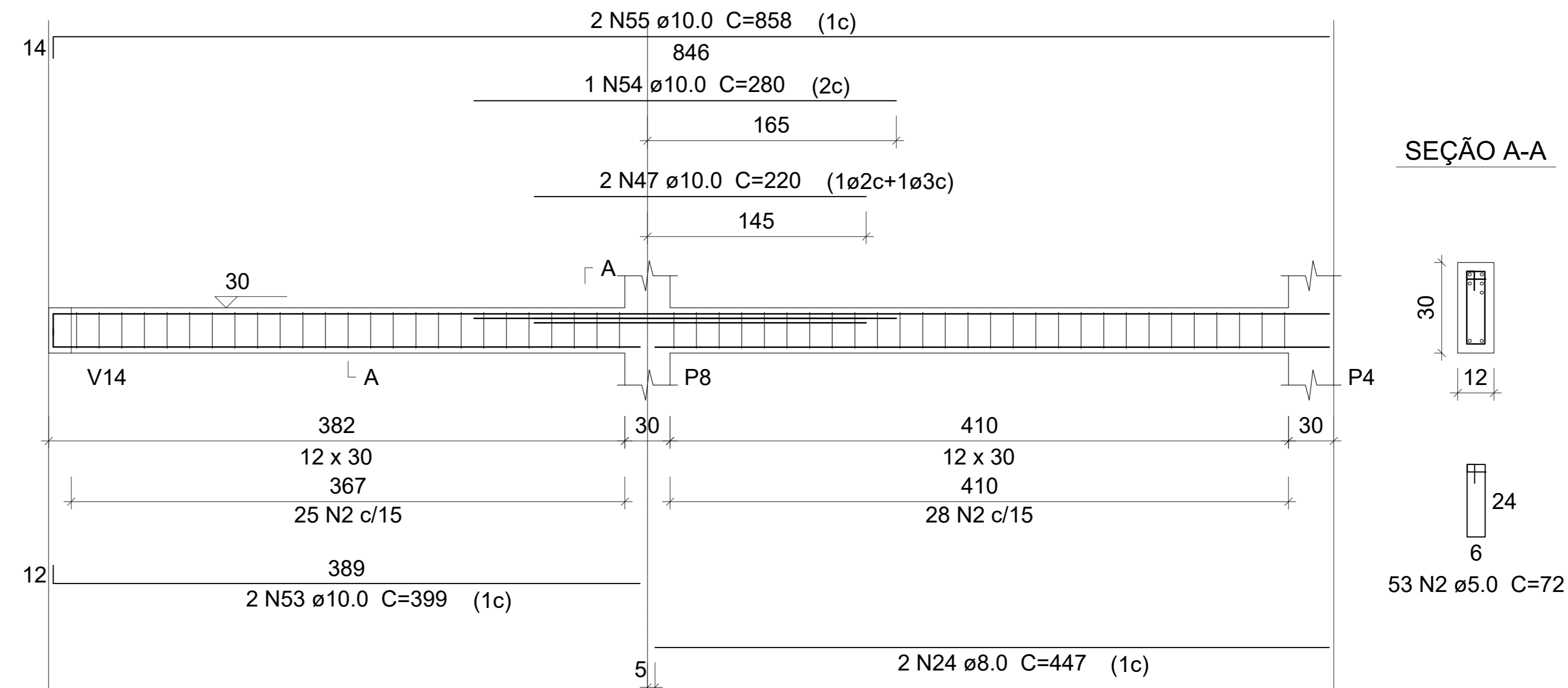
ESC 1:50



SEÇÃO A-A

V12

ESC 1:50



SEÇÃO A-A

ÁÇO	N	DIAM (mm)	QUANT	C.UNIT (cm)	C.TOTAL (cm)
CA60	1	5.0	551	78	42978
	2	5.0	247	72	17784
CA50	3	8.0	4	324	1296
	4	8.0	1	112	112
	5	8.0	2	334	668
	6	8.0	2	822	1644
	7	8.0	1	205	205
	8	8.0	3	836	2508
	9	8.0	4	316	1264
	10	8.0	6	352	2112
	11	8.0	2	362	724
	12	8.0	1	138	138
	13	8.0	2	412	824
	14	8.0	2	727	1454
	15	8.0	6	846	5076
	16	8.0	1	263	263
	17	8.0	2	854	1708
	18	8.0	4	406	1624
	19	8.0	4	464	1856
	20	8.0	1	110	110
	21	8.0	2	167	334
	22	8.0	1	170	170
	23	8.0	2	499	998
	24	8.0	2	447	894
	25	8.0	2	367	734
	26	8.0	3	85	255
	27	8.0	2	814	1628
	28	8.0	2	850	1700
	29	8.0	2	332	664

PREFEITURA		BOMBEIROS / NATURALIS	
PROJETO		FOLHA	
ESTRUTURAL		07/12	
OBRA: REFORMA E AMPLIAÇÃO A CÂMARA MUNICIPAL DE FORMOSO DO ARAGUAIA - TO			
LOCAL: AV. JUSCELINO KUBISTOCHICK			
ÁREAS	PROPRIETÁRIO	ASS.	
ÁREA: 911,97 m²		CÂMARA MUNICIPAL DE FORMOSO DO ARAGUAIA - TO	
ÁREA IMPERMEÁVEL: 218,62 m²			
ÁREA PERMEÁVEL: 693,35 m²	AUTOR DO PROJETO	ASS.	
		LUAN DE ALENCAR BORGES CREA 30969/2010	
ESCALA:	DATA:	ARQUIVO:	DESENHO:
INDICADA	SETEMBRO/2017		
CONTEUDO:			